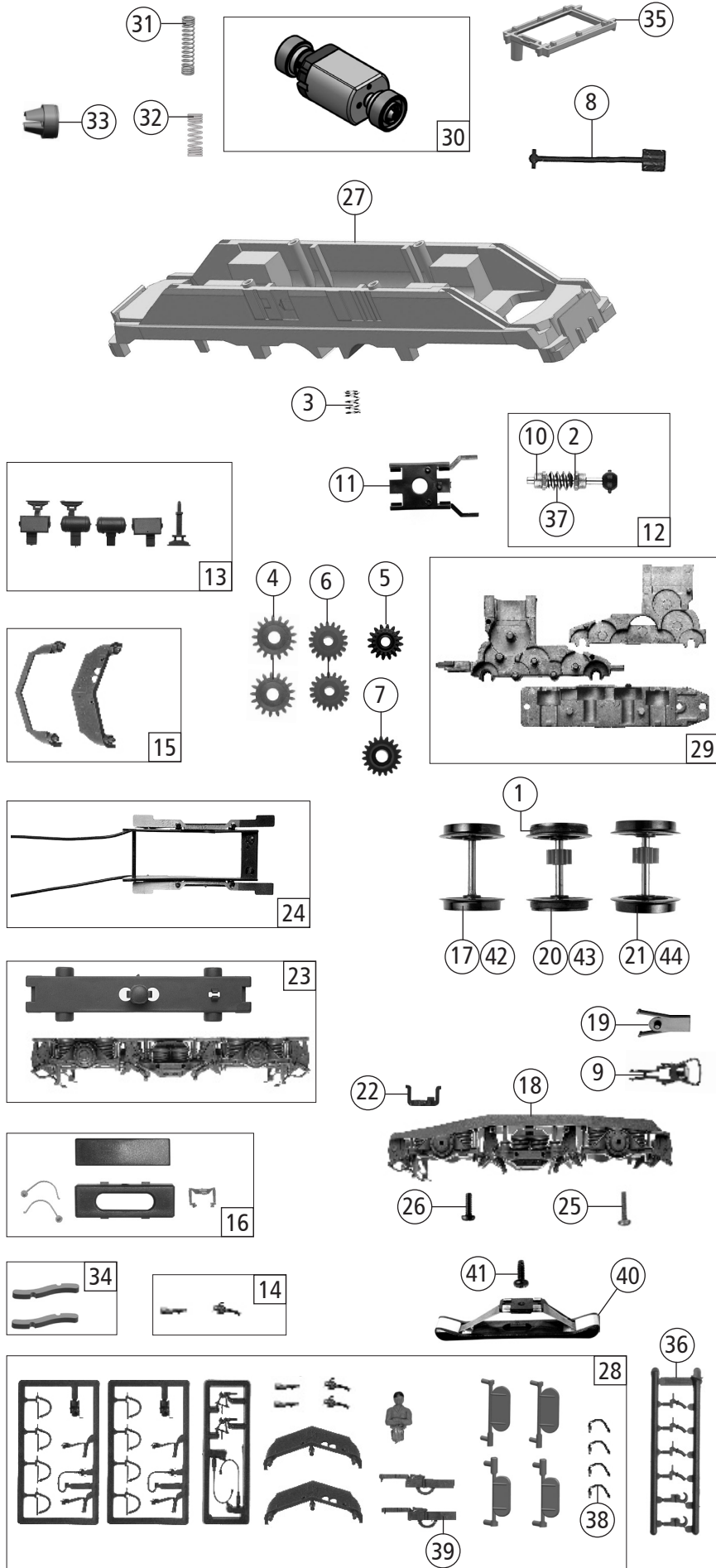


| Pos. Nr. Pos.no. | Beschreibung Description | Art.-Nr. Art.no. | Preisgruppe Price bracket |
|---------------------|---|---------------------|------------------------------|
| 1 | Gehäuse komplett Betr. Nr. 11626 Body assembly no. 11626 | 148312 | 33 |
| 2 | Pantograph Pantograph | 85505 | 19 |
| 3 | Platine komplett Printed circuit assembly | 135972 | 29 |
| 4 | Lokpfeife Loko whistle | 88002 | 6 |
| 5 | Lichtabdeckung ohne Lichttrennung Light cover without light separation | 135412 | 4 |
| 6 | E-Lokführer E-Locho driver | 110407 | 6 |
| 7 | Dachleitung li+re Roof wire L+R | 146216 | 10 |
| 8 | Isolatorsatz Insulating set | 106109 | 6 |
| 9 | TS - Spiegel Part set mirror | 135985 | 5 |
| 10 | Katodenfallableiter Cathodefall arrester | 144272 | 6 |
| 11 | TS - Flachleitungen Part set - flat cables | 135988 | 10 |
| 12 | Isolator Insulator | 109214 | 3 |
| 13 | Brückenstecker Jumper | 129630 | 10 |
| 14 | Scheibenwischer li+re Windscreen wipers L+R | 146212 | 10 |
| 15 | TS - Dachdeckel Parts set - roof cover | 136628 | 10 |
| 16 | Führerstand Driver cab | 135984 | 5 |
| 17 | Griffstange Handrail | 110403 | 5 |
| 18 | Griffstange Handrail | 110404 | 5 |
| 19 | Spitzenlichtabdeckung Cover for loco light transmission | 136325 | 4 |
| 20 | Fahrplanhalter, Handbremshebel Timetable holder, hand brake lever | 131532 | 6 |
| 21 | Isolator Insulator | 108105 | 3 |
| 22 | Puffer links Buffer left | 110398 | 3 |
| 23 | Puffer rechts Buffer right | 110399 | 3 |
| 24 | Schweizer Wappen Swiss coat of arms | 134058 | 6 |
| 25 | Antenne dick Antenna thick | 136629 | 3 |
| 26 | Hebezyliner Pantograph drive | 134782 | 4 |
| 27 | Isolator - 7 Stück Insulator - 7 pcs. | 108196 | 3 |
| 28 | Schraube M1,6x6 mm Screw | 113069 | 3 |
| 29 | Puffergriff lackiert Buffer step coated | 135989 | 5 |
| 30 | TS - Laufstege geb. Part set catwalks | 135990 | 10 |
| 31 | Umlaufblech lackiert End walk plate coated | 136630 | 6 |
| 32 | Maschinenraumfenster li+re Machine room window L+R | 148314 | 14 |
| 33 | TS - Fenster Part set window | 148313 | 10 |
| 34 | GF-Schraube M2x5 mm GF-Screw | 114966 | 3 |
| 35 | Lichtnagel Light pin | 136184 | 3 |
| 36 | Hauptschalterplatte Main switch plate | 135986 | 4 |
| 37 | Frontgriffstange Front handrail | 135987 | 3 |
| 38 | Lüftergitter geprägt Ventilator grid marked | 135983 | 6 |
| 39 | Dachgriff 1+2 lackiert Roof rail 1+2 coated | 135992 | 7 |
| 40 | Spitzenlicht Headlight | 148315 | 4 |
| 41 | Lichtabdeckung Light cover | 146005 | 4 |
| Sound | | | |
| 42 | Lautsprecher Loud speaker | 129524 | 13 |
| 43 | Platine kpl. m. LED-Platine Sound Printed circuit assembly w. LED | 135993 | 30 |
| 44 | Sound-Steckdecoder - 22 Plux Sound decoder - 22 Plux | 147377 | 39 |
| 45 | Lautsprecherbox Loud speaker box | 134067 | 5 |



| Pos. Nr. Pos. no. | Beschreibung Description | Art.-Nr. Art. no. | Preisgruppe Price bracket |
|------------------------|--|----------------------|------------------------------|
| 71414 | SBB RE 10/10 | | |
| 71415 | | | |
| 79415 | | | |
| 1 | Hafringsatz 10 Stk. 12,9-14,6mm Traction tires set 10 pieces 12,9-14,6mm | 40070 | -- |
| 2 | Beilagscheibe Washer | 86108 | 3 |
| 3 | Druckfeder Spring | 120382 | 4 |
| 4 | Zahnrad Z=17/0,4G Gear Z=17 | 86418 | 5 |
| 5 | Schneckenrad doppelt Double worm gear | 86419 | 6 |
| 6 | Zahnrad Z=18 Gear Z=18 | 86460 | 3 |
| 7 | Zahnrad Z=19 Gear Z=19 | 86493 | 3 |
| 8 | Kardanwelle lang Cardan axle long | 87172 | 4 |
| 9 | Standardkupplung komplett Coupling standard | 89246 | 6 |
| 10 | Lager für Schneckenachse Worm axle bearing | 89749 | 6 |
| 11 | Schneckendeckel Wormcover | 106985 | 5 |
| 12 | Schneckensatz Worm set | 100254 | 13 |
| 13 | TS-Fahrwerk Parts set-Undercarriage | 110373 | 9 |
| 14 | TS-Steckdose, Digitalplatte Parts set-Socket, digital plate | 110374 | 7 |
| 15 | Bahnräumersatz Railguard set | 110375 | 7 |
| 16 | Teilesatz Drehgestell Parts set bogie | 110381 | 9 |
| 17 | Radsatz ohne Zahnrad Wheelset without gear | 135975 | 10 |
| 18 | Drehgestellblende Bogie frame | 110383 | 10 |
| 19 | Kupplungsschacht Coupling holder | 110528 | 4 |
| 20 | Radsatz mit 2 Hafringen Wheelset with 2 traction tires | 135978 | 12 |
| 21 | Radsatz ohne Hafringe Wheelset without traction tires | 135977 | 11 |
| 22 | Trittbrett Step | 135976 | 5 |
| 23 | Teilesatz DG Blende Part set bogie | 110380 | 12 |
| 24 | Kontakthalter komplett Current contact frame assembly | 110385 | 9 |
| 25 | GF-Schraube M1,6x6 mm GF-Screw | 114836 | 3 |
| 26 | GF-Schraube M1,6x5 mm GF-Screw | 115269 | 3 |
| 27 | Grundrahmen Base frame | 148311 | 17 |
| 28 | Zurüstbeutel Bag with accessories | 148316 | 19 |
| 29 | Getriebeteilesatz Gear parts set | 110977 | 13 |
| 30 | Motor Motor | 146020 | 25 |
| 31 | Motorkontaktfeder lang Motor contact spring long | 145560 | 4 |
| 32 | Motorkontaktfeder kurz Motor contact spring short | 145561 | 4 |
| 33 | Kardanschale kurz 1,5 mm Cardan bearing short 1,5mm | 87129 | 4 |
| 34 | Kabelklemme Cable clamp | 148301 | 10 |
| 35 | Distanzplättchen KM Spacer | 147060 | 4 |
| 36 | Attrappenrahmen klein schwarz Push in part set | 107808 | 4 |
| 37 | Schnecke Wormgear | 86704 | 6 |
| 38 | EP-Steuerleitung EP-Steering cable | 139347 | 3 |
| 39 | Kurzkupplung Short coupling | 115550 | 6 |
| AC-Wechselstrom | | | |
| 40 | Schleifer 46 mm Slider | 86033 | 14 |
| 41 | PT-Schraube M1,5X5 mm PT-Screw | 108137 | 3 |
| 42 | Radsatz ohne Zahnrad Wheelset without gear | 135994 | 10 |
| 43 | Radsatz mit 2 Hafringen Wheelset with 2 traction tires | 135996 | 12 |
| 44 | Radsatz ohne Hafringe mit Zahnrad Wheelset without traction tires with gear | 135995 | 11 |